



# ApoA Monoclonal Antibody

<b>Catalog No</b>	YP-Ab-00596
<b>Isotype</b>	IgG
<b>Reactivity</b>	Human
<b>Applications</b>	WB;IHC;IF;ELISA
<b>Gene Name</b>	LPA
<b>Protein Name</b>	Apolipoprotein(a)
<b>Immunogen</b>	Purified recombinant fragment of ApoA (4330-4521) expressed in E. Coli.
<b>Specificity</b>	ApoA Monoclonal Antibody detects endogenous levels of ApoA protein.
<b>Formulation</b>	Ascitic fluid containing 0.03% sodium azide,0.5% BSA, 50%glycerol.
<b>Source</b>	Monoclonal, Mouse
<b>Purification</b>	Affinity purification
<b>Dilution</b>	WB: 1/500 - 1/2000. IHC: 1/200 - 1/1000. ELISA: 1/10000.. IF 1:50-200
<b>Concentration</b>	1 mg/ml
<b>Purity</b>	≥90%
<b>Storage Stability</b>	-20°C/1 year
<b>Synonyms</b>	LPA; Apolipoprotein(a; Apo(a); Lp(a)
<b>Observed Band</b>	
<b>Cell Pathway</b>	extracellular region,plasma lipoprotein particle,
<b>Tissue Specificity</b>	Liver,
<b>Function</b>	disease:Elevated plasma concentrations of apo(a) and its naturally occurring proteolytic fragments are correlated with atherosclerosis. Homology with plasminogen kringle IV and V is thought to underlie the atherogenicity of the protein, because the fragments are competing with plasminogen for fibrin(ogen) binding.,function:Apo(a) is the main constituent of lipoprotein(a) (Lp(a)). It has serine proteinase activity and is able of autoproteolysis. Inhibits tissue-type plasminogen activator 1. Lp(a) may be a ligand for megalin/Gp 330.,miscellaneous:Apo(a) is known to be proteolytically cleaved, leading to the formation of the so-called mini-Lp(a). Apo(a) fragments accumulate in atherosclerotic lesions, where they may promote thrombogenesis. O-glycosylation may limit the extent of proteolytic fragmentation.,online information:The Singapore human mutation and polymorphism database,polymorphis
<b>Background</b>	The protein encoded by this gene is a serine proteinase that inhibits the activity of tissue-type plasminogen activator I. The encoded protein constitutes a substantial portion of lipoprotein(a) and is proteolytically cleaved, resulting in



fragments that attach to atherosclerotic lesions and promote thrombogenesis. Elevated plasma levels of this protein are linked to atherosclerosis. Depending on the individual, the encoded protein contains 2-43 copies of kringle-type domains. The allele represented here contains 15 copies of the kringle-type repeats and corresponds to that found in the reference genome sequence. [provided by RefSeq, Dec 2009],

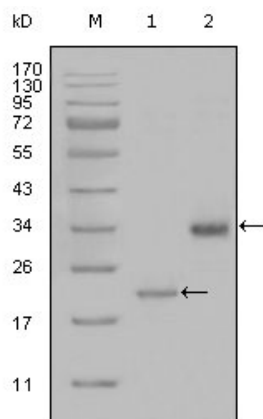
#### matters needing attention

Avoid repeated freezing and thawing!

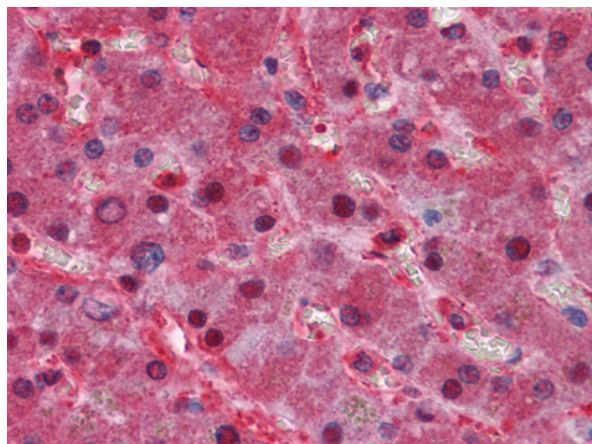
#### Usage suggestions

This product can be used in immunological reaction related experiments. For more information, please consult technical personnel.

### Products Images



Western Blot analysis using ApoA Monoclonal Antibody against truncated LPA-His recombinant protein (1) and truncated Trx-LPA(aa4330-4521) recombinant protein (2).



Immunohistochemistry analysis of paraffin-embedded human Liver tissues with AEC staining using ApoA Monoclonal Antibody.